

Hughes Articulating Rapid Deployment

EMERGENCY RESPONSE SHELTER (HARD-ERS)



*Please note: other optional colours available



The **HARD-ERS Emergency Response Shelter** has been designed specifically for the Emergency Services and can be used in any emergency or disaster relief situations. This versatile one-piece Shelter is exceptionally robust and is operational within just a few minutes. It can be operated as a single unit or it can be extended by connecting several units together. By installing a **Decontamination Pod**, the **HARD-ERS** quickly converts into a highly efficient decontamination facility.

The **HARD-ERS** is extremely functional across a range of other uses:

- Field Hospital
- Casualty Holding Area
- Crime Scene Enclosure
- Command Centre

An insulated version is available for use in extreme climates. This can include either an optional air conditioning system or a heater unit.

Included items

- **HARD** Shelter frame system
- Waterproof neoprene coated 'Ripstop' nylon lightweight cover
- Groundsheet with locating loops for optional water ballast tanks
- Weather skirts for use without groundsheet with locating loops for optional ballast tanks
- Clip on guy lines with pegs and hammer
- Two easy lift carrying and storage valises for the shelter and for the ground sheet and the optional ballast tanks
- Liner repair kit

Design Details

- Unique patented robust locking hinge design
- Patented Anodised aluminium frame for strength and light weight
- Operational within 3 minutes – quick and simple to erect by two people
- Zipped entry and exit doors with fitted windows and window blinds
- Zipped weatherproof end sections for use when connecting shelters together in a row
- Cover fitted to frame to prevent it coming into contact with the ground causing it to become dirty
- Can be used with or without the detachable groundsheet, depending on the application
- Cover and ground sheet are joined with Velcro to ensure weatherproof integrity
- Weatherproof air vents are fitted to improve circulation
- White roof allows maximum light into the shelter from the outside
- The **HARD-ERS** frame is equipped to accept the rapid fit pod liner system
- When the shelter is used with the Decontamination Pod, the ground sheet supports and protects the sump on the pod
- Access sleeves are fitted to all four corners for weatherproof cable or hose access
- A large access sleeve is incorporated to accommodate heating or air-conditioning ducting
- External loops are fitted for optional banners, signs or logos

Optional Equipment / Ancillaries

- Internal low energy link light systems (either 110v or 240v)
- External telescopic mast lighting systems (either 110v or 240v)
- Floor panel options
- Decontamination shower pods
- Liner pods – showers, washroom, toilet, bed facilities
- Thermal inner liners
- Heating units
- Combined heating and air conditioning units
- Generator options (110v or 240v)
- Storage and transit cases in timber or aluminium
- Spares kit for the **HARD** shelter
- Tool kit for **HARD** Shelter frame



Materials

Cover Materials

Test	Method	Requirements
Base Fabric	N/A	Ripstop Nylon
Coating Material	N/A	Polyurethane
Total Weight	ISO 3801	200g/m ² +/-10%
Tensile Strength	ISO 1421	1600N/1100N/5cm
Tear Strength	ISO 4674 Method A1	100N/60N/5cm
Hydrostatic Head	N/A	10,000mm
Flame Retardency	FAR 25.853.A	Pass

Frame Materials

Part	Material
Main Section/Top Braces and scissor Braces	Anodised Aluminium (6063-T6)
Hinge Plates - Aluminium	Aluminium (6082-T6)
Hinge Plates - GRP	GRP (IGM F 200)
Hinge Locking Handle	Stainless Steel with Black Reinforced Polyamide Handle
Brackets	Stainless Steel
Main Handles	Black Reinforced Polyamide with Brass Insert
Fastener Material	Stainless Steel
Feet	Black Rubber
Scissor Brace – End Insets	Black HDPE
Scissor Brace – Central Insets	Nylon 6
Leg Guide Brackets	Black HDPE
Roller Plate Spring	Spring Stainless Steel – type 301/302
Roller Plate Assembly	Stainless Steel
Rollers	Nylon 6.6
Rivnuts	Aluminium
U-Bolts	Stainless Steel
Washers	Nylon
Top Brace Elastic Cord	8mm OD Shock Cord
Top Brace Elastic Cord Spacer	16mm OD Polybutalene Tubing
Leg Retaining Magnets	Neodymium Iron Boron (NdFeB)

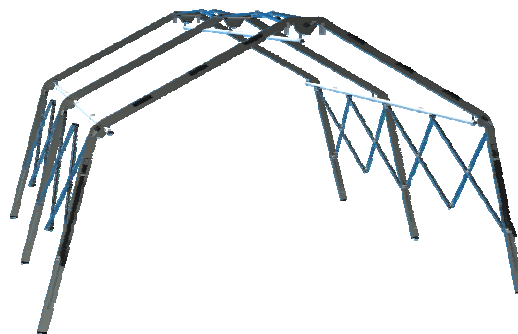
Technical Data

MODEL	FLOOR AREA	EXTERNAL DIMENSIONS (cm)	INTERNAL DIMENSIONS (cm)	PACKED DIMENSIONS (cm)	TOTAL WEIGHT UNPACKED	TOTAL WEIGHT PACKED
ERS 8	8 sq m	200x400x250	200x390x250	190x30x30		45kg
ERS 16	16sq m	400x400x250	400x390x250	190x45x45		71kg

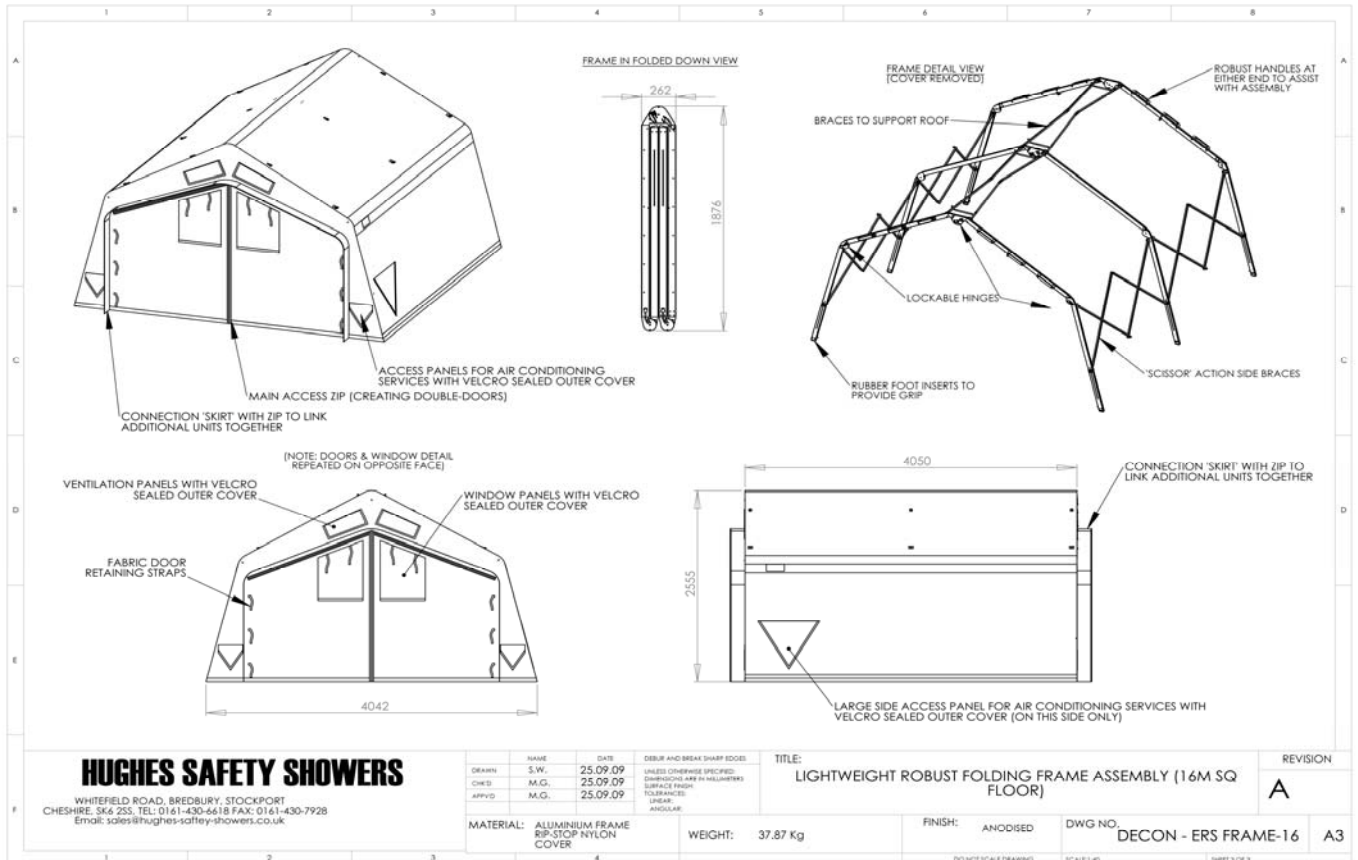
HARD Shelter Models

HARD-ERS 8/16*	Emergency Services Response Shelter (Police, Fire, Ambulance, Coast Guard, Mountain Rescue) Hospitals
HARD-MS 8/16*	Military Shelter
HARD-HRS 8/16*	Humanitarian Relief Shelter
HARD-GPS 8/16*	General Purpose Shelter

*Please note: two sizes available, 2m x 4m and 4m x 4m.



General Arrangement Drawing



Warranty Information

The models offered would be guaranteed against bad workmanship or faulty materials for a period of 12 months from despatch our works

Hughes Shelter Systems Ltd
 Whitefield Road, Bredbury, Stockport, Cheshire, SK6 2SS
 Tel: +44 (0)161 430 8787 Fax: +44 (0)161 430 7928

sales@hughes-shelter-systems.com

For more information visit our website
www.hughes-shelter-systems.com